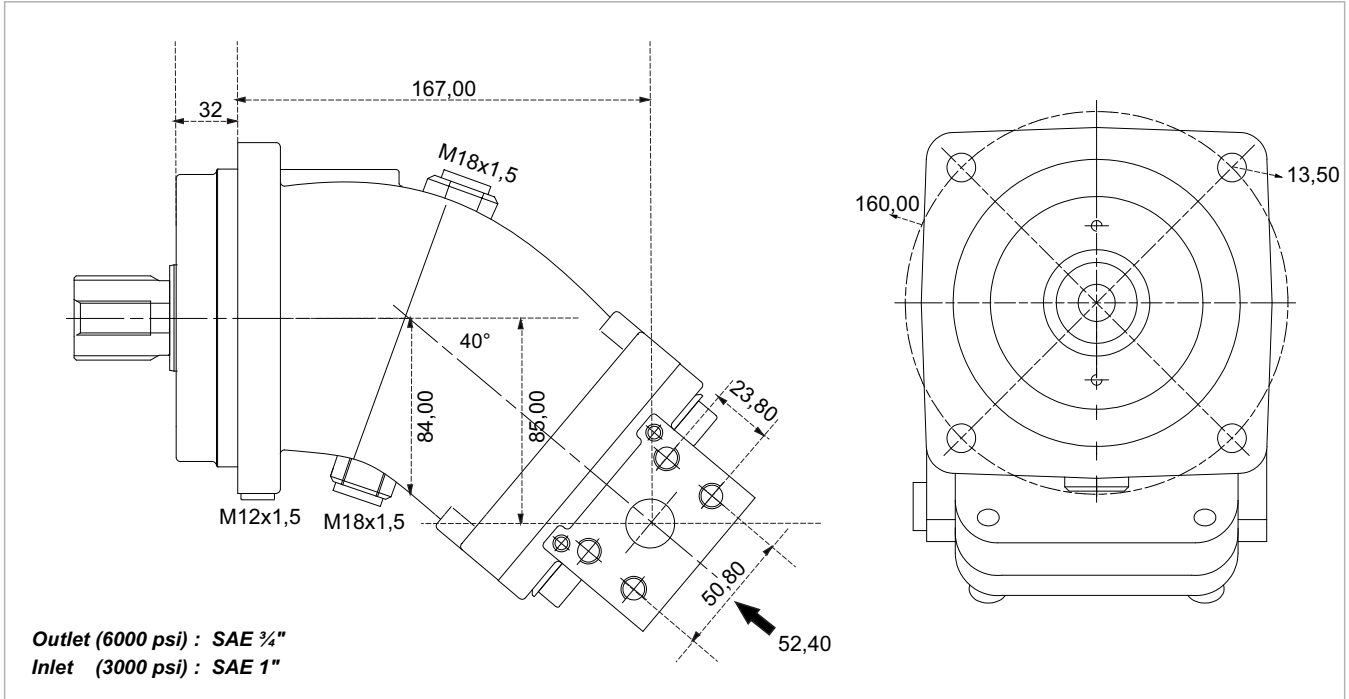
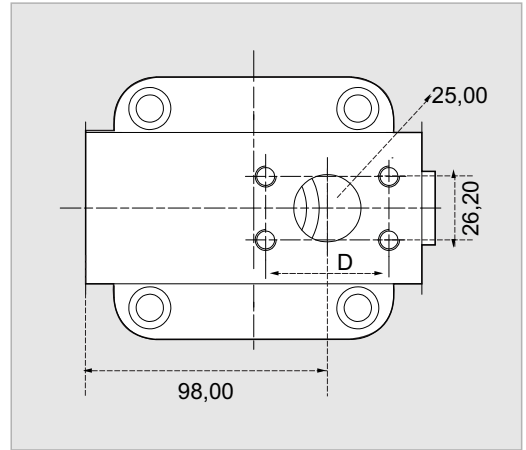


# 2PS 63

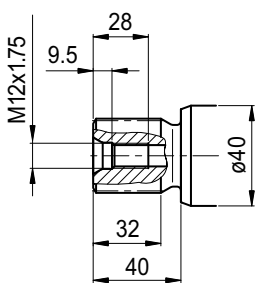


<b>x 1000 rpm</b>	63,00 cc
<b>x 1500 rpm</b>	94,50 cc
<b>Max. Continuous Pump Speed</b>	2300 rpm
<b>Max. Continuous Pressure</b>	400 bar
<b>Max. Peak Pressure</b>	450 bar
<b>Max. Torque at 350 bar</b>	350 Nm
<b>Max. Flow</b>	144,90 l/min.
<b>Min. Pump Temperature</b>	-25 °C
<b>Max. Pump Temperature</b>	110 °C
<b>Weight without accessories</b>	18,00 kg
<b>Weight with accessories</b>	18,50 kg
<b>Rotation</b>	CW-CCW



## S1

Splined shaft DIN 5480  
W35x2x16x9g



## K1

Parallel keyed shaft  
DIN 6885, As10x8x50

