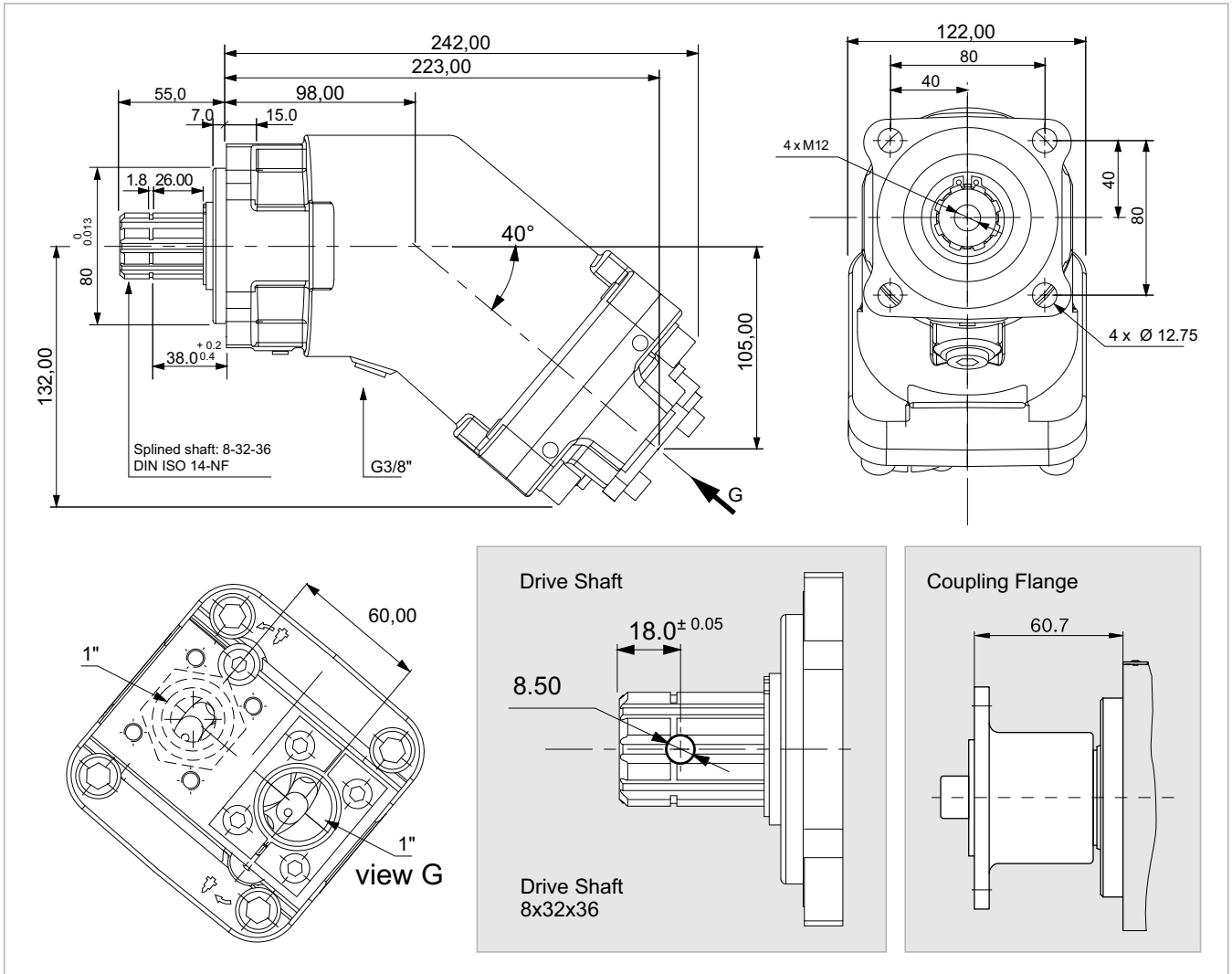


# 2PBA 108



<b>x 1000 rpm</b>	108,40 cc
<b>x 1500 rpm</b>	162,60 cc
<b>Max. Continuous Pump Speed</b>	1700 rpm
<b>Max. Limited Pump Speed</b>	1900 rpm
<b>Max. Continuous Pressure</b>	350 bar
<b>Max. Intermit. Peak Pressure</b>	400 bar
<b>Max. Torque at 350 bar</b>	620 Nm
<b>Weight without inlet fitting</b>	15,50 kg
<b>Weight with inlet fitting</b>	15,90 kg
<b>Torque without inlet fitting</b>	17,92 N.m
<b>Torque with inlet fitting</b>	18,45 N.m
<b>Rotation</b>	CW-CCW
<b>Fluid</b>	Min.B.Hyd.Oil
<b>Inlet &amp; Outlet</b>	1"

Flow, Speed, Pressure List of 2PBA 108

