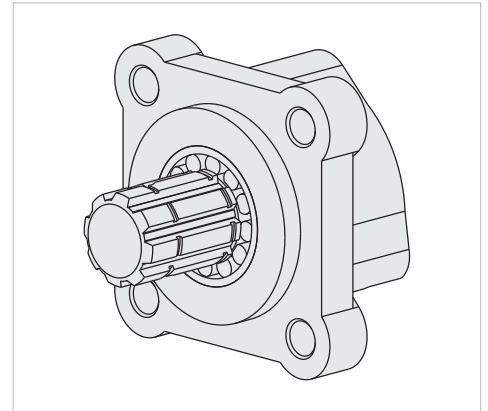
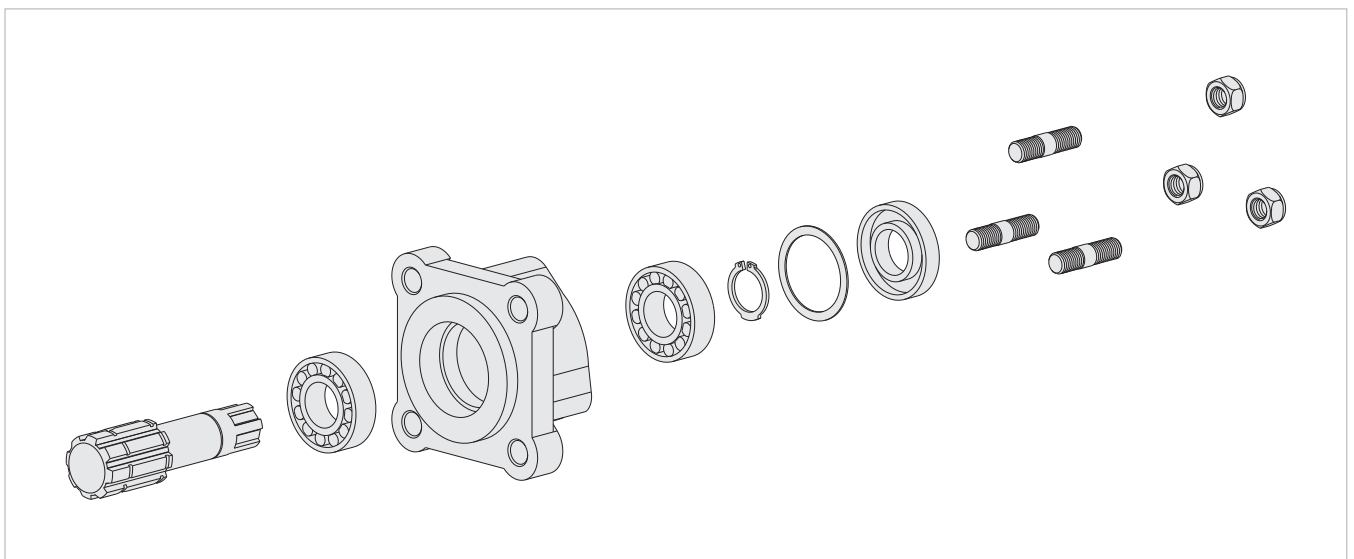
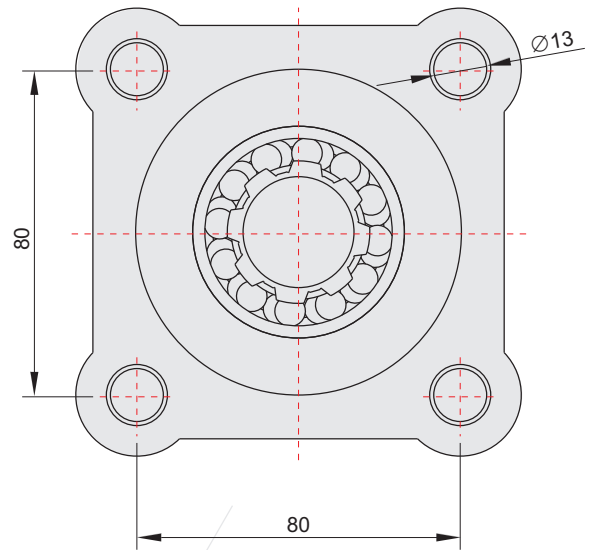
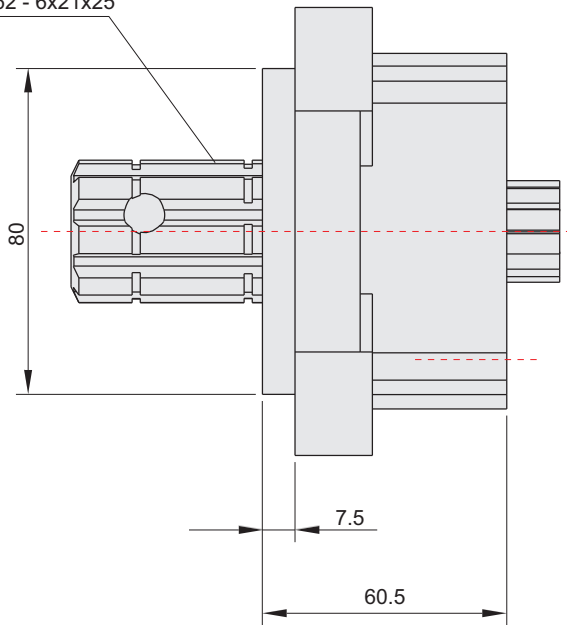


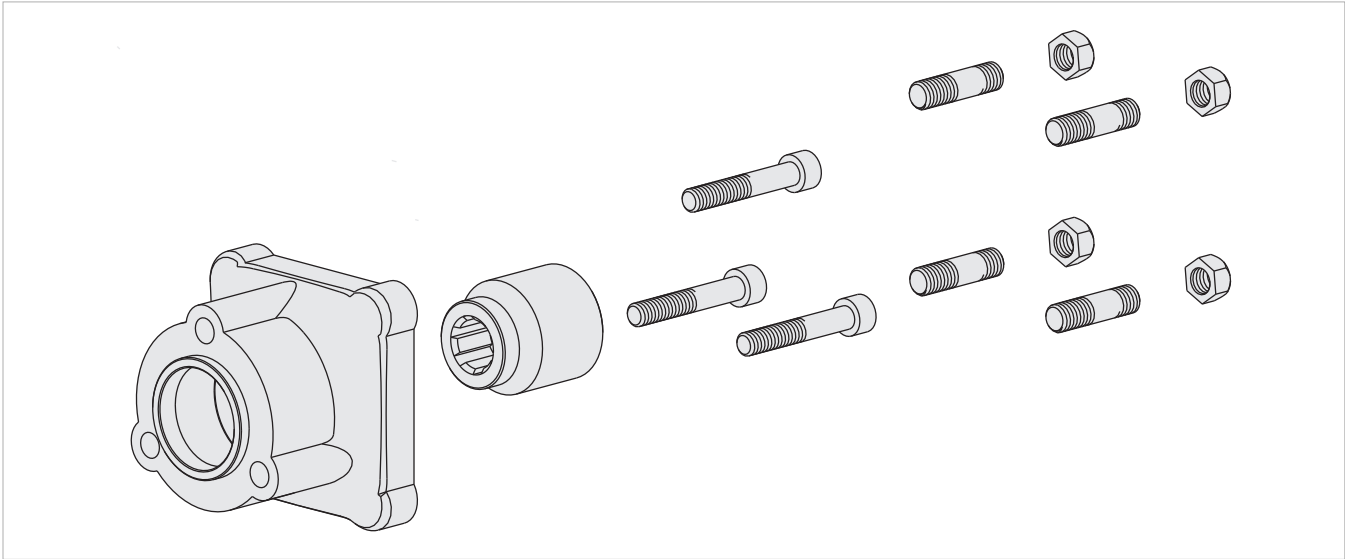
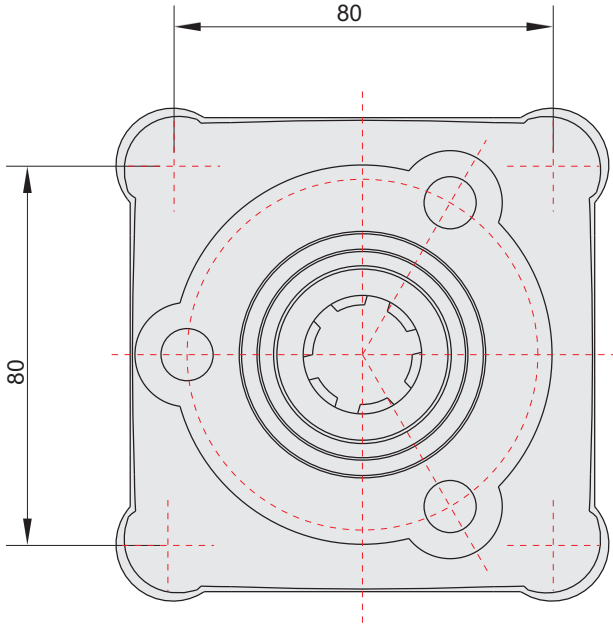
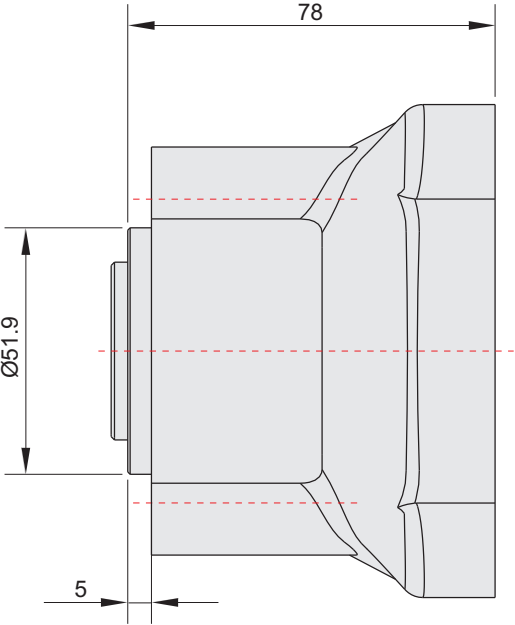
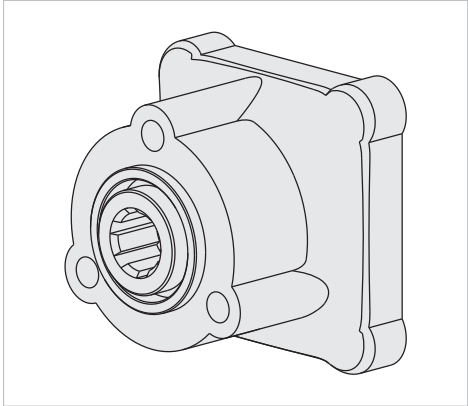
ISO Adapter 4x3



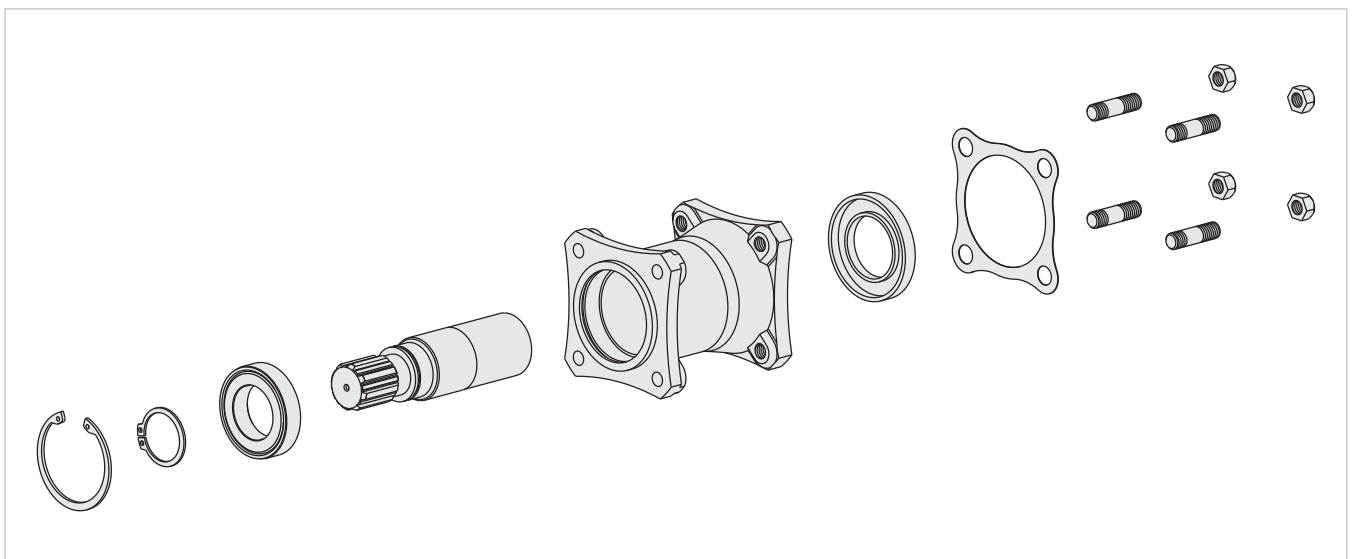
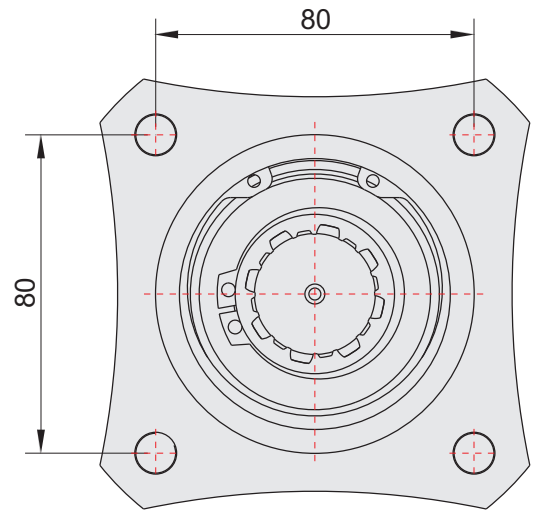
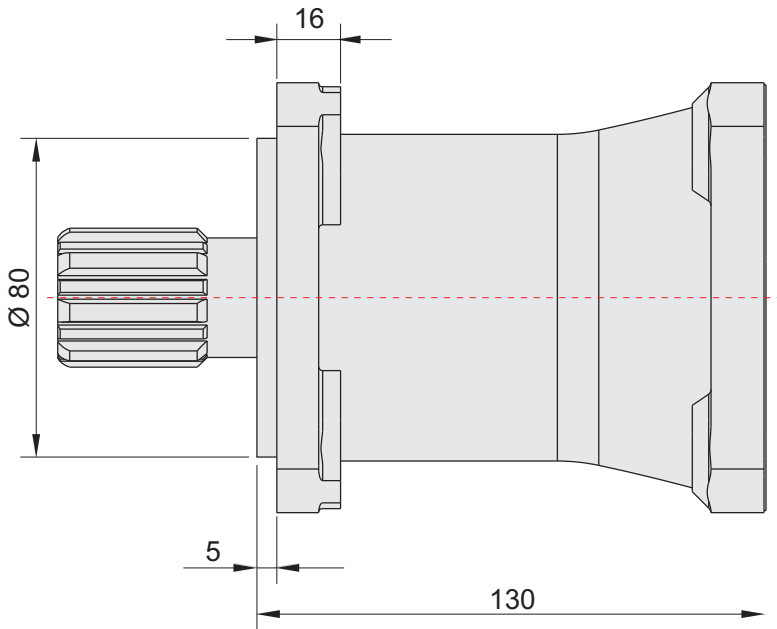
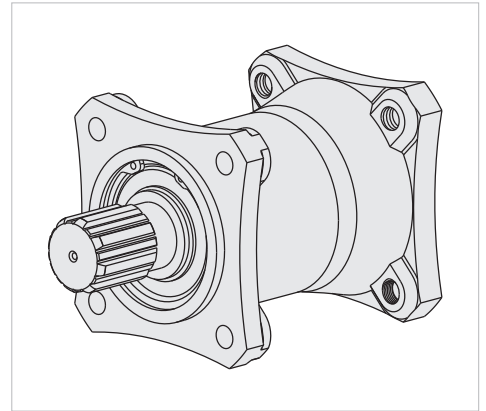
DIN 5462 - 6x21x25



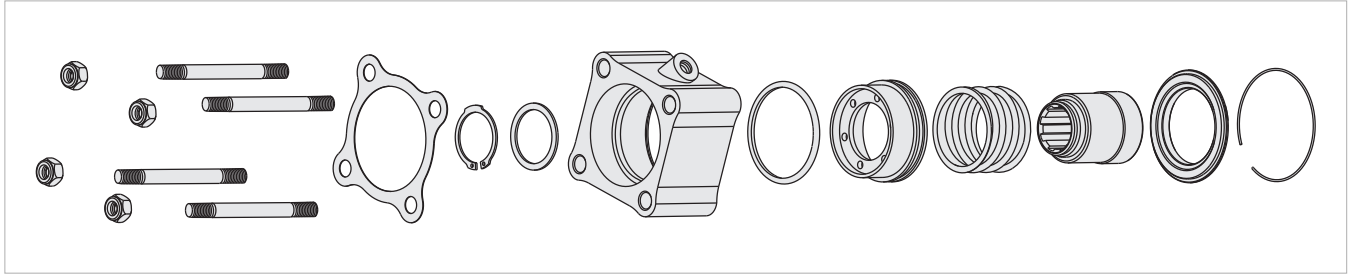
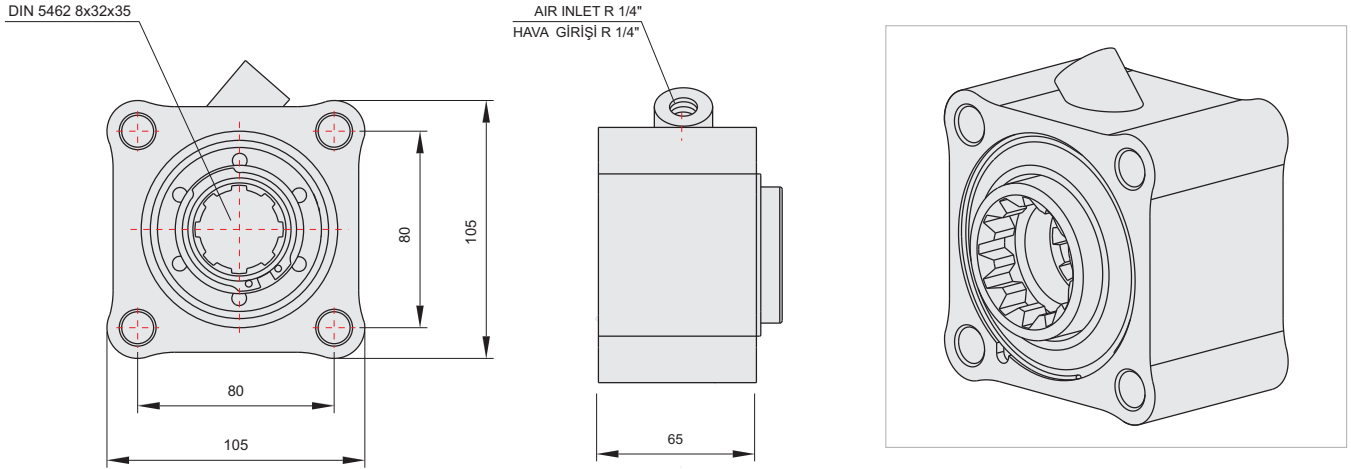
UNI Adapter 3x4



ISO Adapter 4x4



ZF1 Power Take Off



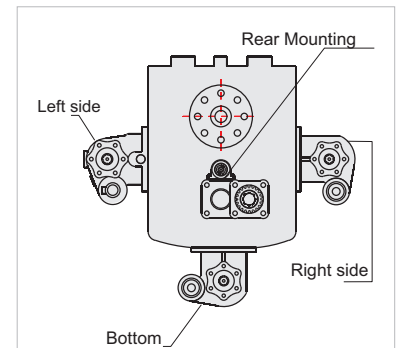
GENERAL DATA

P.T.O. CODE	ZF1	
Torque	48,9 Kgm	479,5 Nm
Power	34,5 Hp	25,7 Kw
Speed	513 rpm	513 rpm
Ratio	1/1	1/1
Weight	7 kg	15,4 lb
Mounting	Kuyruk	Rear
Control	Havalı	Pneumatic
P.T.O. Rotation	Sağ - ISO	Right - ISO

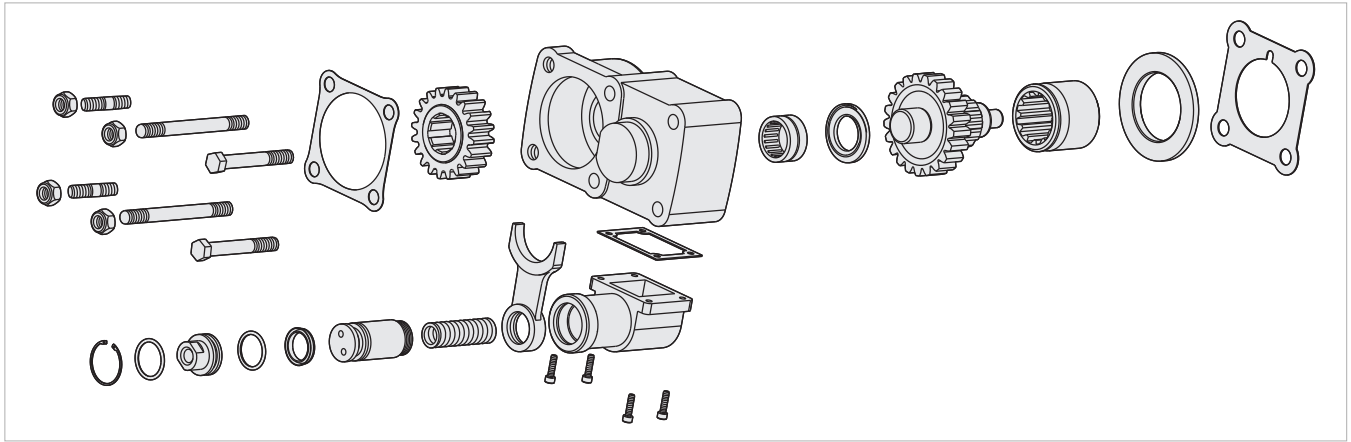
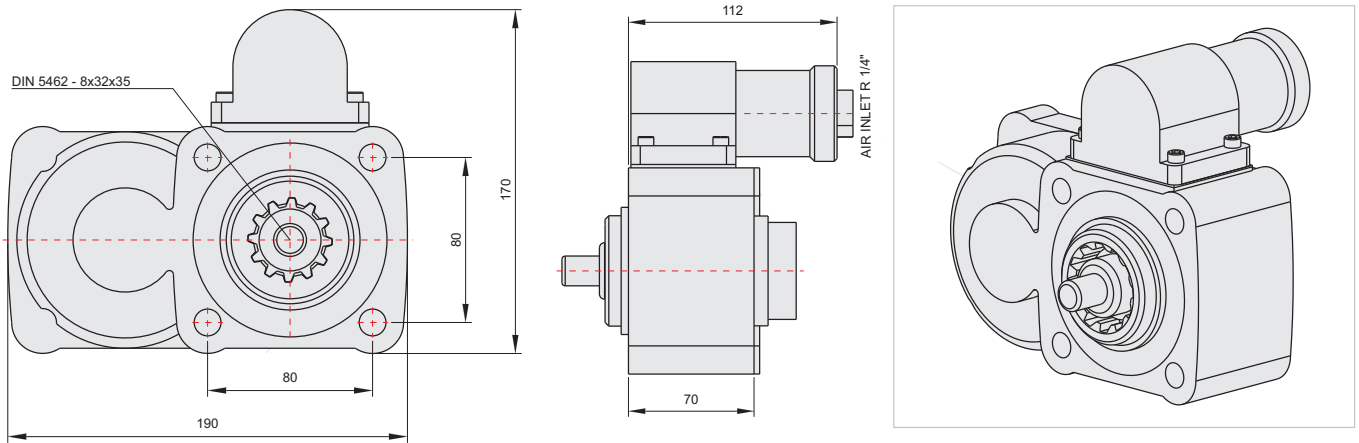
Gearbox	Used Vehicles
ZF16S251-221-151-150-130- ZF S5/AK/65-120-111-110-92- GP ZF S5/AK/6S-90-80-70-66- 65-55-50-42-36-35-ZF-ECOMIT 9S75-9S109-16S109 ZF NEW ECOSPLIT 16S1620TD- 16S1820TO-18S1820TO- 16S2220TD-16S220TO- 16S2520TO- 16S2023TDL	MAN / MERCEDES / BMC PROFESYONEL / FORD CARGO / CHRYSLER HINO / DODGE / FARGO / IVECO /DAF/ DAEWOO / RENAULT

The rotation of the chosen pump has to be opposite with the rotation of P.T.O.

Fill the oil of the gear box after mounting the P.T.O.



ZF2 Power Take Off



GENERAL DATA

P.T.O. CODE	ZF2	
Torque	26,5 Kgm	260 Nm
Power	24,5 Hp	18,3 Kw
Speed	675 rpm	675 rpm
Ratio	1/1,2	1/1,2
Weight	11 kg	24,4 lb
Mounting	Kuyruk	Rear
Control	Havali	Pneumatic
P.T.O. Rotation	Sol - ISO	Left - ISO

The rotation of the chosen pump has to be opposite with the rotation of P.T.O.

Gearbox	Used Vehicles
ZF16S251-221-151-150-130- ZF S5/AK/65-120-111-110-92- GP ZF S5/AK/6S-90-80-70-66- 65-55-50-42-36-35-ZF-ECOMIT 9S75-9S109-16S109 ZF NEW ECOSPLIT 16S1620TD- 16S1820TO-18S1820TO- 16S2220TD-16S220TO- 16S2520TO- 16S2023TDL	MAN / MERCEDES / BMC PROFESYONEL / FORD CARGO / CHRYSLER HINO / DODGE / FARGO / IVECO /DAF/ DAEWOO / RENAULT

Fill the oil of the gear box after mounting the P.T.O.

