

## Start up recommendations for By-Pass valves

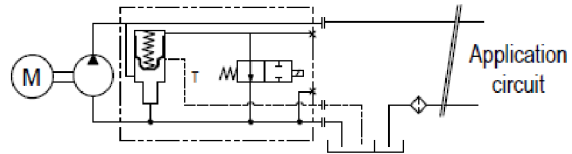
Please read before installing the By-Pass valve

For 2PBA-2PE pumps applications where the pump is drive by continuous running PTO (PTO which cannot be disengaged) Çelebi Hidrocel offers a By-Pass valve which is fitted onto the back of the pump. This solution allows the continuous running of the pump.

- Without ceating problems of fluid overeating.
  - Without affecting pump service life.
  - With no modifications necessary to the hydraulic equipment on the truck.
- By-Pass reference in function of the pump:

Pump model	Displacement (cc)	Tension
2PBA	12 to 63	24 V
	80 to 130	24 V
	12 to 63	12 V
	80 to 130	12 V
2PE	12 to 32	12 V
	40 to 63	12 V
	12 to 32	24 V
	40 to 63	24 V

### Diagram:

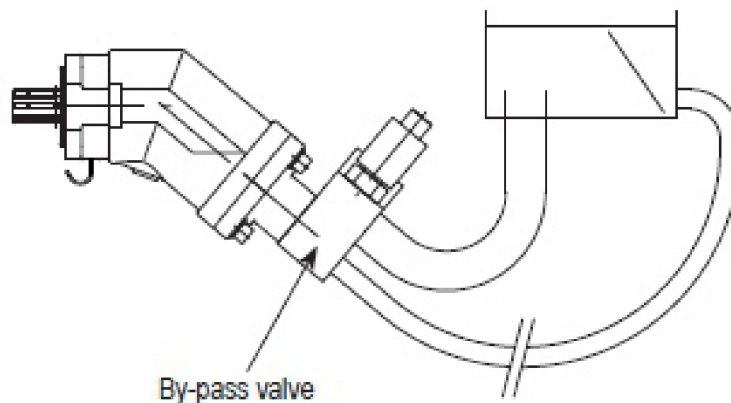


### Installation:

The By-Pass valve is directly connection to the buttom of the pump\_2PBA-2PE

Fixed on the outlet with “banjo” provided with the valve●.

Fixed on the inlet with 2 screws also design to fix the aspiration pipe of the pump on the By-Pass.



Be careful during the assembly, the inlet and the outlet of the By-Pass valve have to coincide with the inlet and the outlet of the pump.

## Technical data:

- The By-Pass valve is piloted with a 12 or 24V electric signal. A electric line has to be install on the vehicle up to By-Pass valve
- On working mode of your hydraulic equipment, the By-Pass valve is switch on.
- On non working mode of your hydraulic equipment, the By-Pass valve is switch off.
- A manual emergency system allows to keep the power of your hydraulic equipment in case of electric failure.
- If the distributor of your installation limits the oil return to the tank at less than 5l/mn or if the distributor is "close center" a drain hose has to be install between the By-Pass valve and the tank to assure a sufficient oil curculation.

CHARACTERISTICS	2PBA63	2PBA80	2PBA63	2PBA80	2PE32	2PE63	2PE32	2PE63
Tension (V)	24	24	12	12	12	12	24	24
P max. peak (bar)	400	400	400	400	400	400	400	400
P max. continuous (bar)	350	350	350	350	350	350	350	350
Weight (Kg)	3,6	3,6	3,6	3,6	3,6	3,6	3,6	3,6
Tightness	Ip65	IP65	IP65	IP65	IP65	IP65	IP65	IP65
Function	Normaly open	Normaly open	Normaly open	Normaly open	Normaly open	Normaly open	Normaly open	Normaly open
Widht (mm)	118	118	118	118	118	118	118	118
Height (mm)	186,5	186,5	186,5	186,5	186,5	186,5	180,5	186,5
Thickness (mm)	67	69	67	69	67	69	67	69
Tightening	3/4"	1"	3/4"	1"	3/4"-16UNF-2B	1"1/16UNF-2B	3/4"-16UNF-2B	1"1/16UNF-2B
Tightening outlet (Nm)	50	100	50	100	50	100	50	100
Tightening inlet (Nm)	25	25	25	25	25	25	25	25

